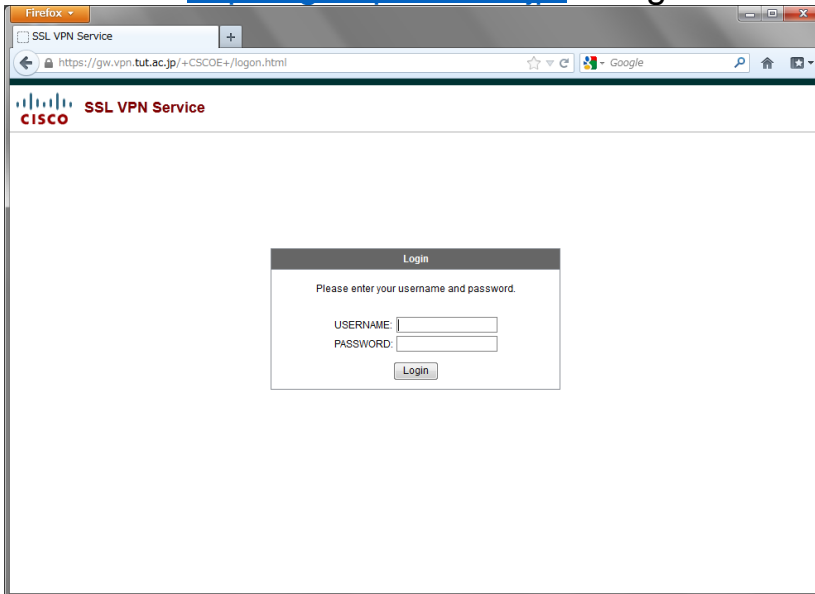
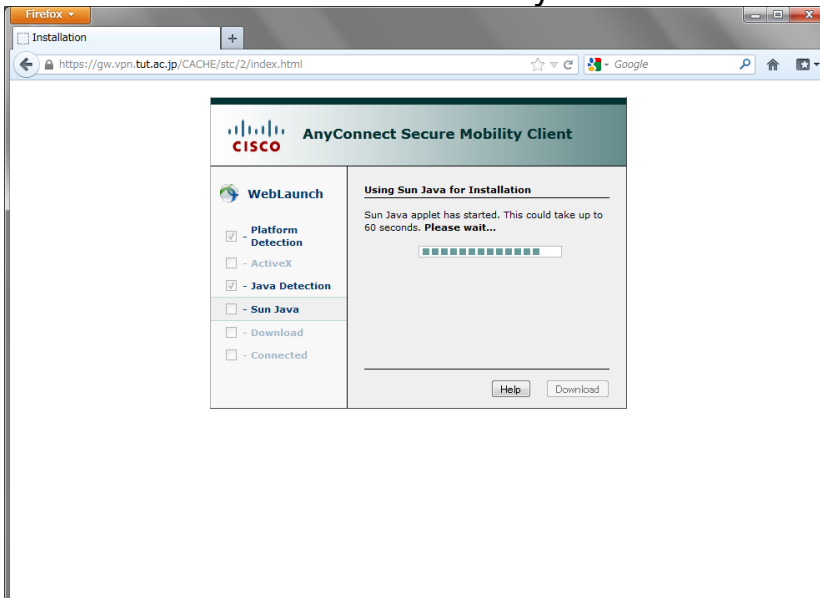


# How to connect using SSL VPN

1. Access <https://gw.vpn.tut.ac.jp/> using a browser (including Firefox).

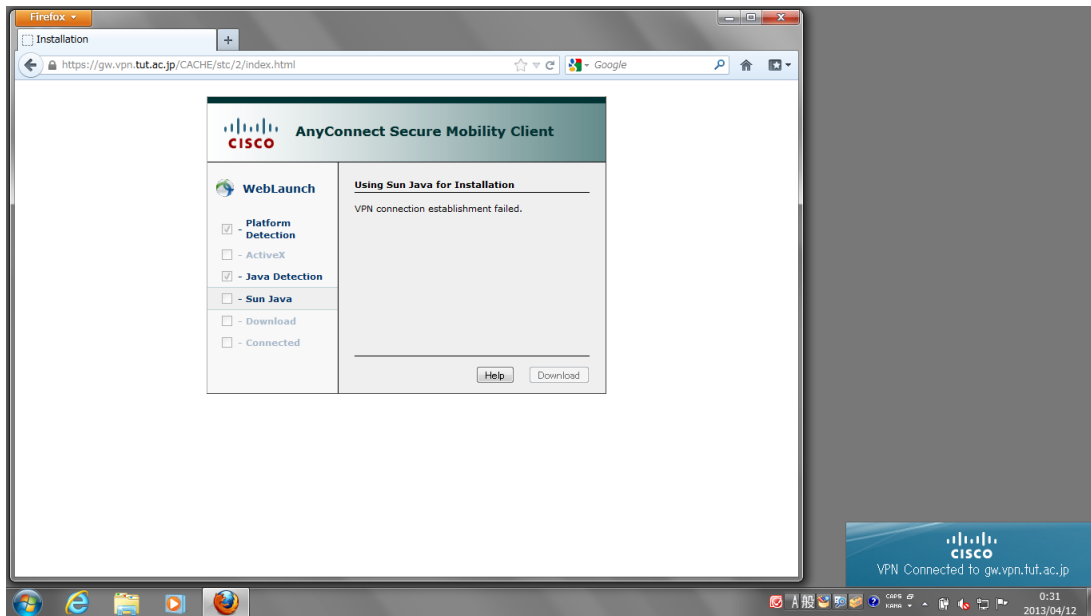


2. Enter the user name and password of your university common account.
3. Java starts. Download of “AnyConnect Secure Mobility Client” starts.

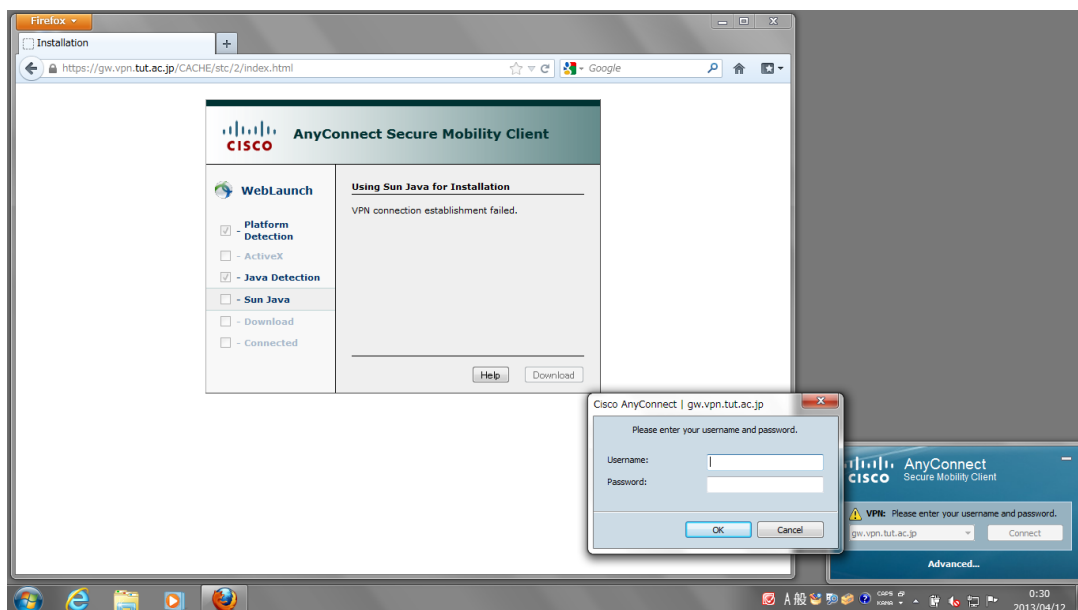


4. In case of Windows 7/XP, installation automatically starts after the download. In case of Windows 8 and Mac OS X, the file needs to be manually downloaded and installed.  
To download the file, the process stops at “Manual installation” screen. Click a link, which is displayed as “Windows 7/Vista/64/XP” or “Mac OS X 10.5+ (Intel)”, on the screen.  
To install, execute the downloaded file and follow the instructions of the wizard.

5. After installation is complete, VPN connection automatically starts. Once a VPN connection is established, a pop-up is shown at the bottom-left of the screen. (The pop-up is only displayed for a short period.)

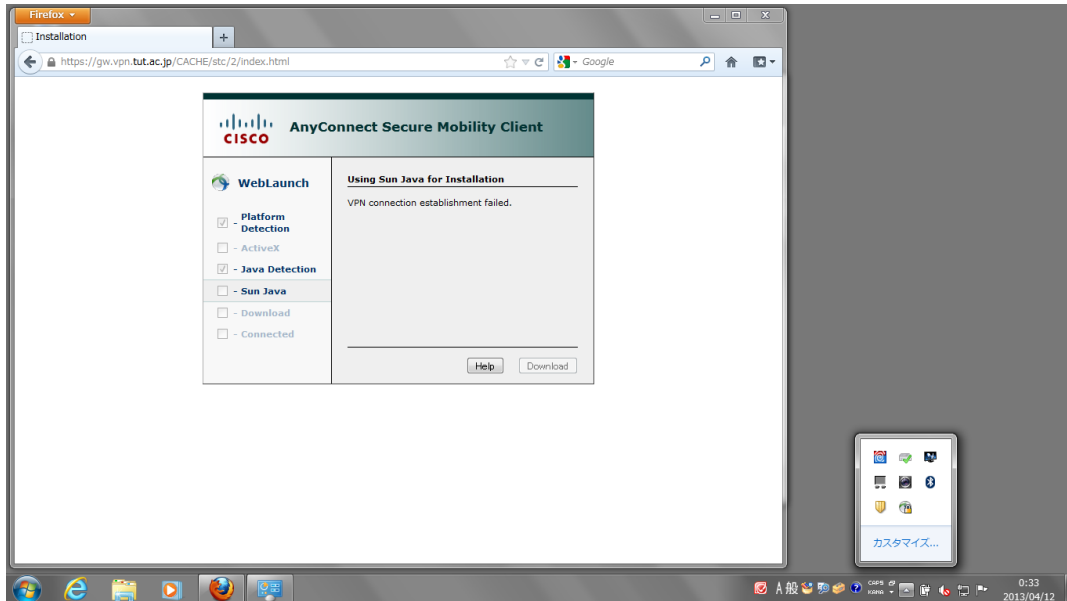


6. To connect using VPN next time, start “AnyConnect Secure Mobility Client” from the Start Menu.  
When “AnyConnect Secure Mobility Client” starts, a pop-up is displayed at the bottom-left of the screen. Enter your login name and password.



# How to disconnect

1. Right click the “AnyConnect Secure Mobility Client” icon shown in the icon tray.



2. A window of “AnyConnect Secure Mobility Client” is displayed as a pop-up at the bottom-right of the screen. Click “Disconnect” button.

